



It's time to move in with nature.  
It's time to move in to

SUKRA'S  
**AURA**

**SUKRA PROPERTY DEVELOPERS ( P ) LTD**









*Live in the Prestigious  
place of*

**Coimbatore**

**Bharathi Park,  
Saibaba Colony**



**YOUR HOME.**  
**INSIDE THE CITY.**  
**AMIDST NATURE.**

AURA





## *A Lifestyle That's Rare To Come By...*

As parents, our children come first always. We want the best of education, lifestyle and experiences for them.  
How great would it be if your child could get to enjoy all of that in the comfort of your very home?

Presenting Sukra's Aura with plenty of features in the surroundings for the overall development of children.  
Since we strongly believe superior living doesn't happen through shortcuts, at Aura, every aspect of living has been thoroughly thought-through, so your children and you experience a lifestyle that's nothing short of international standards.

Right from the selection of location till the fittings and fixtures, everything has been uncompromisingly handpicked. Situated on Bharathi Park Road, Sai Baba Colony this is a vibrant part of Coimbatore perfect for the entire family, thanks to the presence of plenty of schools, hospitals, malls and many more conveniences. We have carefully planned the entire community and your living spaces in such a way that you enjoy maximum privacy, more light and ventilation. And the best part of all this is that you get this dream-like lifestyle at a never-before price!

# AURA







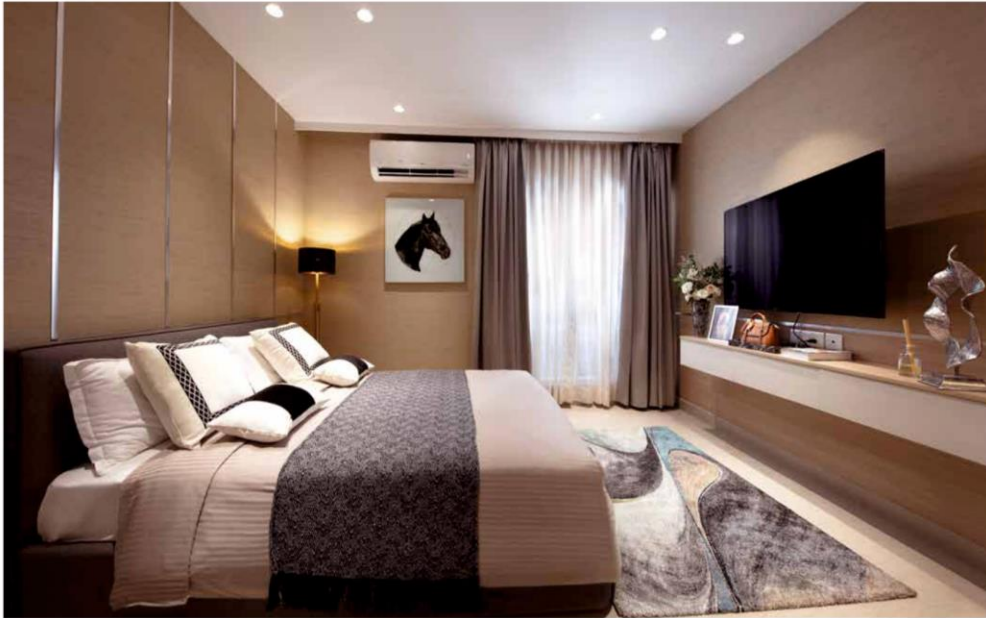


ALL THAT'S CLOSE  
TO YOUR HEART,  
NOW CLOSER TO YOU.

















**Live in Aura**  
*Live in Luxury*

**FLOOR PLAN**

ROAD





**FLAT A - NORTH**  
**AREA - 1510 SQ.FT**  
**2 BHK / 3 BHK (Optional)**







**LOWER LEVEL**



**UPPER LEVEL**







**FLAT B - EAST**  
**AREA - 1410 Sq.ft**  
**2 BHK**





**FLAT B - EAST**  
**AREA - 2820 Sq.ft**  
**3 BHK / 4 BHK**  
**( DUPLEX )**





## Efficient use of Living Spaces



At Sukra Property Developers Aura you get the Best in Segment Usable Area. The homes are designed to maximize the floor space so that your homes may feel more spacious

## Within the City



Uncrowded.

We understand the importance of Fresh Air. Breathing in the morning sun, enjoying your coffee with a side calm or just leaving the noise behind. Built for those who like life uncrowded.

## Best in Segment open Area



At Sukra Aura is a treat to the mind and soul, the landscape caters to physical and psychological comfort of all the occupants



## **Come home to Nature Come home to Sukra's Aura**

Step into a blissful heaven of 10 exclusive flats,  
with 50% open spaces. Find yourself in a universe brimming with  
natural beauty and greenery. Don't just co-exist with nature.  
Come home to it every day

At Sukra.s Aura, you will find passionately crafted designs  
and engineering that fuse modern living with nature.  
Our apartments exhibit state of the art  
infrastructure to suit the very best standard of living



## BRANDS WE USE



**Schindler Lifts**

**Jaquar**  
Bath Fittings

**Panasonic**  
WIRES & SWITCHES

**Supreme**  
People who know plastics best

**KAVERY**  
★ PREMIUM ★  
AN ISO 9001 : 2015 COMPANY  
**UNBREAKABLE TANK** ★  
PVC PIPES | UPVC PIPES | ELECTRICAL PIPES | WATER TANK  
| PREMIUM AFFORDABLE SANITARYWARE |

**UltraTech**  
CONCRETE  
*The Engineer's Choice*

**ap**  
asianpaints

 **Chettinad**  
cement

  
SAINT-GOBAIN



## Best in Segment Specifications



At Sukra's Aura, is built to deliver on promise of infrastructure quality. From the floor tiles to electrical fixtures, the elevators and even the sanitary network.

## Best in Class Ventilation



With apartments growing in every nook and corner of this city, natural light and air are difficult to come by. The linear design of the architecture ensures that Sukra's Aura is abound in sunlight and ventilation

## The Location Advantage



Disconnected from the noise, connected to what's important and surrounded by greenery. Located in Bharathi Park Road, with close proximity to major Schools and shopping malls





## SPECIFICATIONS

**Structure** RCC Framed Seismic Resistant Building

**Wall** red Bricks / Fly Ash Bricks for Inner & Exterior Walls

**Flooring** All rooms with 1200 x 600 mm tiles Balcony with rustic tiles Staircase with granite flooring Toilets with 2 x 2 antiskid flooring & glazed wall tiles upto 10'

**Doors & Windows / Ventilators** UPVC Shutters / Frames Main Door - Fero Doors or Equivalent Bedroom Door - Fero Doors or Equivalent Toilet Door - WPC Doors / Frames

**Kitchen** Granite cooking platform with single bowl SS. Sink wall tiles upto 4' height above the table top

**Lifts** Automated lifts from Johnson / OTIS / Schindler

**Painting** Putty and emulsion finish for inner walls & for exterior wall with white cement & emulsion finish by Asian Paints

**Staircase** Granite Flooring with SS Handrail

**Electrical** Separate D.B with individual M.C.B for each flat with Anchor ( Panasonic ) / KEI wires and switches. A.C Socket provision in bedrooms



# GLIMPSE OF FEW OF OUR PROJECTS

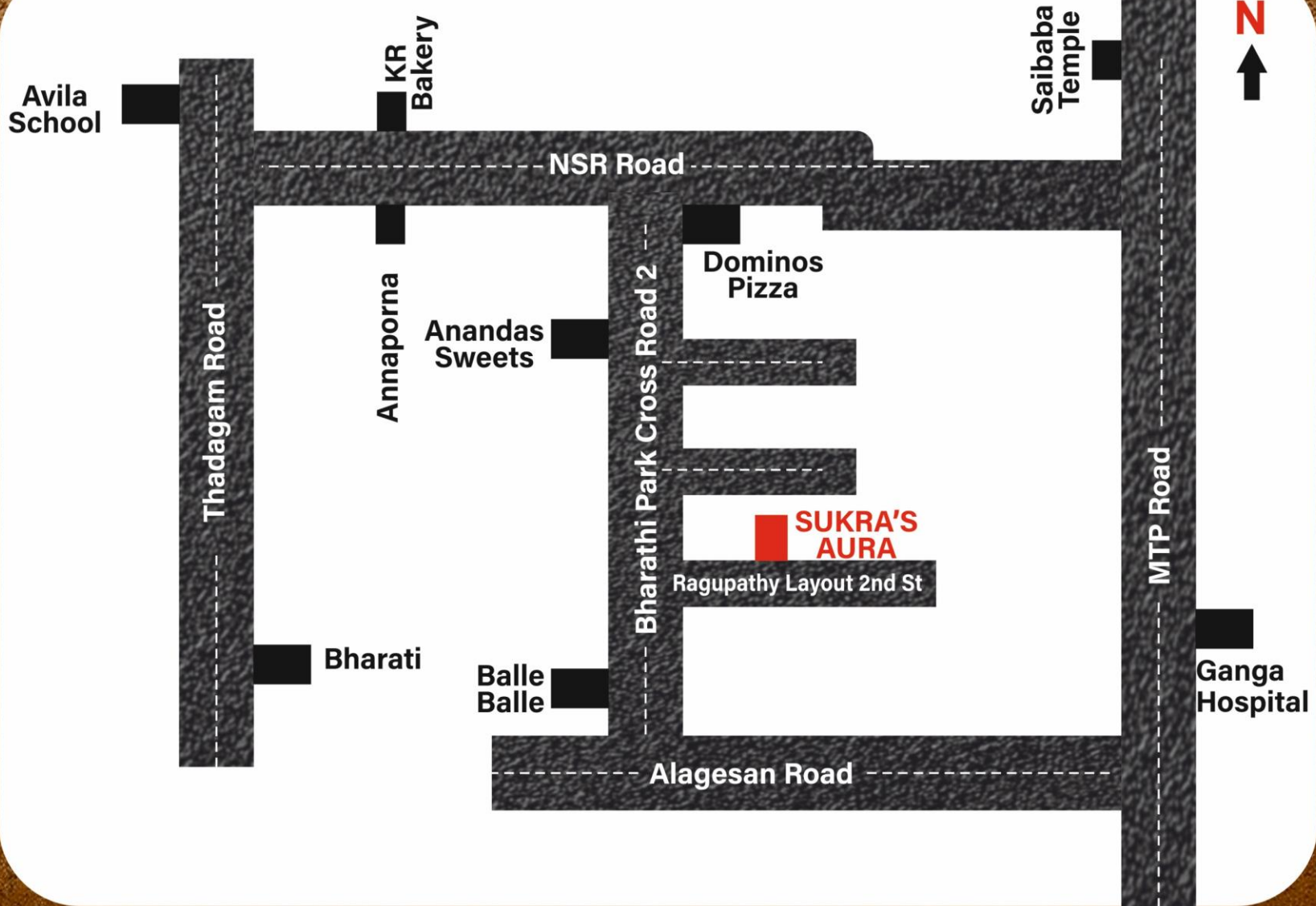




# *The Science of Wellbeing*









Site Location QR



## Where Life Blooms

Where roots are strong and dreams are free .

A place for growth, for you, for me.

The earth and sky in harmony.

Life blooms here ,naturally



## **SUKRA PROPERTY DEVELOPERS ( P ) LTD**

Coimbatore - 641 025. Tamil Nadu, INDIA Tel: 9843186076 &7550187555

[www.sukradevelopers.com](http://www.sukradevelopers.com) e-mail: [sukradevelopersoffice@gmail.com](mailto:sukradevelopersoffice@gmail.com)

\*\*All information, specification, plans, amenities and visual representations contained in the materials are subject to change from time to time by the developer and / or the competent authorities and shall not form part of the offer or contract. No part of the materials shall constitute a representation or warranty.

The Floor plans are approximate measurements and subject to final survey